

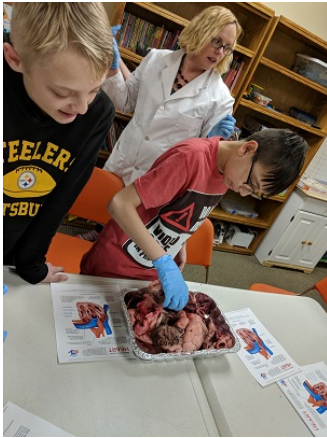


# Chippewa and Russells Point Neighborhood Outreach Centers



## Announcements

*The Centers will be closed on Thursday 15<sup>th</sup> and Friday 23<sup>rd</sup> through Friday 30<sup>th</sup>*



**Family Activity Night** ~ Come to the Chippewa and Russells Point Centers on Wednesday, March 7<sup>th</sup> to do an activity with Annie Mead from the OSU Extension Office. She will be at the Chippewa Center at 4:30 pm and at Russells Point at 6:00 pm. In February the kids made their own conversation hearts and watched as Annie dissected a real pig and cow heart. She talked with them about the different sections of the heart and their functions. She then showed them these areas on the real hearts. The kids were able to put on gloves and hold and explore the hearts, which excited some- and grossed out a few others!

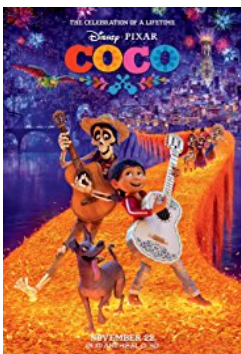


Fundraiser for Outreach Center at the Indian Lake Rollarena on Wednesday, April 4<sup>th</sup> from 6:00 - 8:30 pm. Please join us for a fun evening of skating as we raise money for the centers. Admission is only \$3.00 and you can also sponsor children by donating money to the Center to be given to a family to cover the cost.

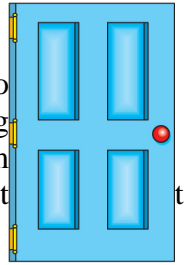


On February 1<sup>st</sup> kids from the Chippewa Center went tubing at Mad River Mountain. They spent three hours going down the 1000 foot slopes at the Avalanche Tubing Park. This was offered to the kids who have been coming in the most and working on their homework at the Centers as a reward.

There will be a **St. Patrick's Day Party** on Wednesday, March 14<sup>th</sup> at Chippewa at 4:30 pm and at RP on Wednesday, March 14<sup>th</sup> at 6:30 pm. We will play games, make crafts and give out prizes. We hope to see you there and don't forget to wear your green!!



The Russells Point and Chippewa Centers will once again be working with the kids at each center to decorate a door to help raise money for Logan County families affected by cancer. We will be talking with the kids to see how they want to decorate the doors this year. The doors will be on display from in Bellefontaine from March 26<sup>th</sup> through April 22<sup>nd</sup>. They will then go up for auction on April 26<sup>th</sup> at the Logan County Fairgrounds to raise additional funds.



### Upcoming Events at Chippewa

- ★ **Family Activity Night** ~ Wednesday, March 7<sup>th</sup> at 4:30 pm.
- ★ **Movie Nights** ~ March 2<sup>nd</sup>, 9<sup>th</sup>, 16<sup>th</sup>, and 22<sup>nd</sup>
- ★ **St. Patrick's Day Party** ~ Wednesday, March 14<sup>th</sup> at 4:30 pm
- ★ **Healthy Choices** ~ Wednesday, March 14<sup>th</sup> at 5:00 pm.
- ★ **Birthday Party** ~ Thursday, March 22<sup>nd</sup> at 4:30 pm.

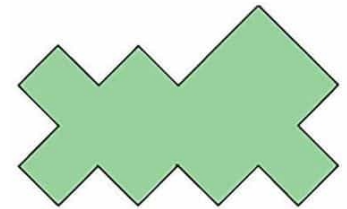
### Upcoming Events at Russells Point

- ★ **Family Activity Night** ~ Wednesday, March 7<sup>th</sup> at 6:30 pm.
- ★ **St. Patrick's Day Crafts**~ Wednesday, March 14<sup>th</sup> at 6:30 pm
- ★ **Birthday Party** ~ Wednesday, March 21<sup>st</sup> at 6:30 pm

### Thank you!

- The following people for volunteering to help the kids with homework at both Centers: Suzy Mallory, MJ Kohler, Dana Kinsey, Shannon Chamberlain, Donald Willis, Terrin Bok and Jill Young.
- Padrone's Pizza for continuing to donate the two large pizzas for the kids who do homework on Tuesdays.
- Richwood Banking Company for donating two dozen cookies every Friday for the kids to enjoy.
- Annie Mead for making conversation hearts with the kids, and for bringing the pig and cow heart for the kids to see and dissect.
- MJ Kohler for making cupcakes for the kids.
- Rite Aid for the box of candy.

**Did you know question of the month:** **Question:** You are to make one cut (or draw one line) that will divide the following shape into two identical parts. (line doesn't have to be straight)



**February Question:** *I add five to nine and get two. The answer is correct, but how?*

**Answer:** *If you add 5 hours to 9:00 am, you get 2:00 pm.*

### March Birthdays

Grace Strong ~ 1<sup>st</sup>    Lindsay Eddy ~ 5<sup>th</sup>    Dalton Longwell ~ 12<sup>th</sup>    Erik Hoffer ~ 18<sup>th</sup>    Anela Hatfield ~23<sup>rd</sup>

#### Chippewa Outreach Center

13976 Ironwood Avenue in Lakeview  
Phone: 937-843-9283    Fax: 937-843-9283  
Monday through Friday 9:30 am to 5:30 pm

#### Russells Point (At Galilee Lutheran Church)

301 Lincoln Boulevard in Russells Point  
Phone: 937-843-9283    Fax: 937-843-9283  
Mondays and Wednesdays from 6:00- 7:30 pm

**Drew Shick**

**Director of Chippewa and Russells Point Neighborhood Outreach Centers**